



SOLBERG

Discover the Possibilities

Flexible and Multi-Application Filters for the PD Blower Industry

Inlet "L" Style Pressure/Vacuum Filter "FST" Series

- ♦ **Reduce Wear and Tear** - Lengthen the life of your blowers by piping remote, cool air
- ♦ **Extreme Duty Environments** - Install packages safely in these conditions
- ♦ **Minimize Stock Levels** - Carry one filter that can handle both pressure and vacuum applications

Issues to the Industry

- ♦ PD Blower packages are placed in a variety of environments. This requires flexibility in how the package can be setup and how the filter is used.
- ♦ The FST Series is a multi-purpose filter capable of handling both inlet pressure and vacuum applications. A quick, retrofit in the field converts the filter for remote piping or extreme duty environments.



Retrofitting the FST in the Field

Extreme Duty Applications:
SpinMeister Precleaner



Protect High Temperatures:
Remote piping clean, cool air



Multi-stage filtration:
Add wire mesh or polyester slip fit element



APPLICATIONS & EQUIPMENT

- ♦ Blowers - PD and Side Channel
- ♦ Remote Draw Air Intake
- ♦ Industrial & Severe Duty
- ♦ Piston, Screw & Sliding Vane Compressors
- ♦ Vacuum Pumps & Systems
- ♦ Engines, Tractors, Loaders, Dozers, Cranes
- ♦ Agricultural and Mining Machines
- ♦ Off-road Construction
- ♦ Pneumatic Conveying
- ♦ Waste Water Aeration



Flexible and Multi-Application Filters for the PD Blower Industry

Inlet "L" Style Pressure/Vacuum Filter "FST" Series

DESIGN FEATURES & SPECIFICATIONS

- ♦ "L" Style inlet filter - Side inlet tube and bottom outlet port
- ♦ Multi-Stage filtration to protect tight tolerances of precision machined equipment
- ♦ Vacuum levels to 16" Hg (Non-Gas Tight)
- ♦ Center bracket located for minimal flow restriction
- ♦ Durable carbon steel construction with baked enamel finish and powder coated weatherhood
- ♦ 1/4" tap on the outlet
- ♦ Polyester: 99%+ removal efficiency standard to 5 micron
- ♦ Paper: 99%+ removal efficiency standard to 2 micron
- ♦ Temp (continuous): min -15°F(-26°C) max 220°F (104°C)
- ♦ Filter change out differential: 10"-15" H₂O over initial delta P
- ♦ Pressure drop graphs available upon request

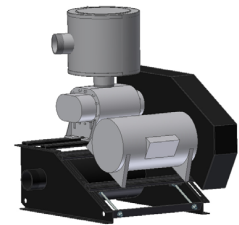


DESIGN OPTIONS (Inquiries Encouraged)

- ♦ Pressure Drop Indicator
- ♦ Side Access Filters (IVPL)
- ♦ Available in **Stainless Steel**
- ♦ Epoxy coated housings
- ♦ Various media available
- ♦ Custom Inlets/Outlets

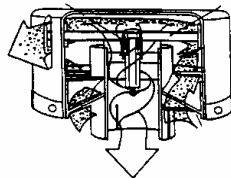
COMPLETE SOLUTION - Silencer Base Frame

Use Solberg's **BBF Series** to reduce the size of your blower package and differentiate it from traditional packages. Its' compact design, easy assembly and cost savings makes our blower base frame series the new choice in blower packages.



DESIGN OPTIONS - Add Either Prior to Shipment or After Installed

SpinMeister™ Precleaners, SM Series-Extreme Duty



SpinMeister™ Air Flow

- ♦ By adding a SpinMeister Precleaner, on the side inlet tube, it can increase the life expectancy of the primary filter element.
- ♦ The SpinMeister removes 85% of large particles from the air stream before they reach the filter element.

Slip Fit Filter Elements, AKG Series-Extreme Duty



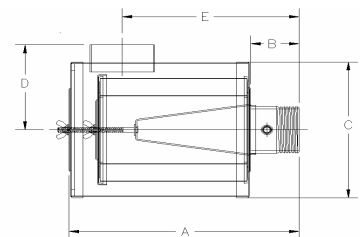
- ♦ Solve extreme duty environments without dramatically increasing pressure drop by adding the AKG series slip fit elements.
- ♦ The slip fit series allows you to add a low back-pressure wire mesh pre-filter to the inlet of the housing which removes large particles before they impact the filter element.

DESIGN CONFIGURATION

with Polyester Element	with Paper Element	Tube Inlet	MPT Outlet	Dimensions - Inches					Rated Flow SCFM	
				A	B	C	D	E	Nominal Rating	Element Rating
FST-31P-150	FST-30P-150	2"	1-1/2"	8 3/8	3	8 1/8	5 5/8	6	85	195
FST-31P-200	FST-30P-200	2"	2"	8 3/8	3	8 1/8	5 5/8	6	135	195
FST-231P-250	FST-230P-250	3"	2 1/2"	14 7/8	3	8 1/8	5 1/4	12	195	300
FST-235P-300	FST-234P-300	4"	3"	14 3/8	3	10	6 1/4	11	300	570
FST-245P-400	FST-244P-400	4"	4"	15 3/8	4	15 7/8	9 1/2	11	520	880
FST-275P-500	FST-274P-500	4"	5"	15 3/8	4	15 7/8	9 1/2	11	800	1100
FST-375P-600F	FST-374P-600F	6"	6" Flg	20 3/8	5	15 7/8	11	15	1100	1500
FST-377P-800F	FST-376P-800F	6"	8" Flg	21 5/8	6	20	13	15	1800	1825

125/150# Pattern Flg	DIMENSIONS - inches			No. of Holes	Flange Thickness
	O.D.	B.C.	B.H.		
6"	11	9 1/2	0.88	8	0.38
8"	13 1/2	11 3/4	0.88	8	0.38

DRAWING



SOLBERG
Discover the Possibilities